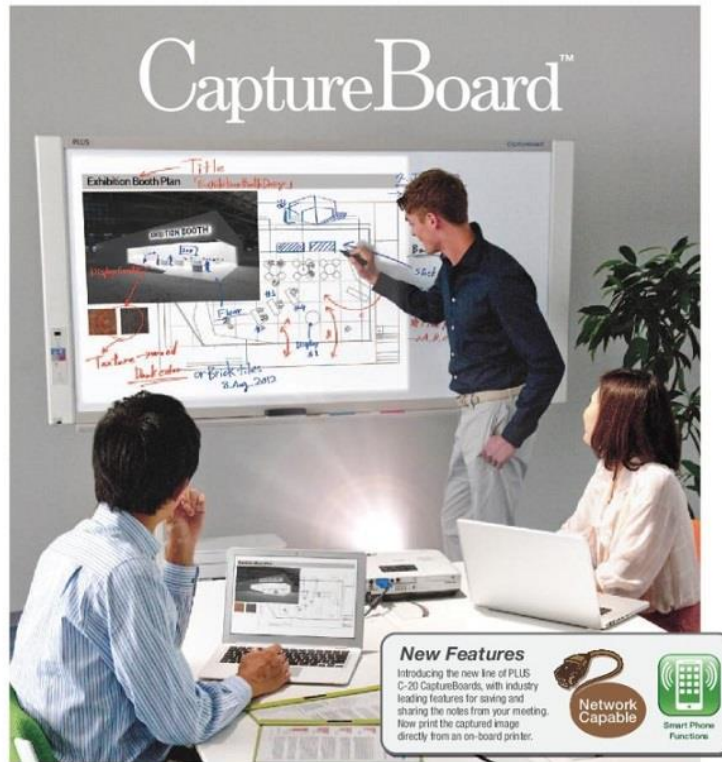


## Specifications

# PLUS

*Conceive your next idea here!*

**NEW** Models  
**C-20S**  
**C-20W**



### New Features

Introducing the new line of PLUS C-20 CaptureBoards, with industry leading features for saving and sharing the notes from your meeting. Now print the captured image directly from an on-board printer.



*Capture the projected image and your hand-written notes!*

## PROJECT · WRITE · CAPTURE

Product Designs  
Financial Spreadsheets  
Architectural Plans  
Business Charts  
Education Lessons  
and more...

Notes  
Corrections  
Captions  
Annotations  
Additions  
and more...

Save as a digital file.  
Print in color.  
Keep an exact record of the presentation.  
Share with meeting attendees.  
Distribute in an email.  
and more...

[www.ergooffice.co.nz](http://www.ergooffice.co.nz)

04 232 6607

[ergo4u.salesnz@gmail.com](mailto:ergo4u.salesnz@gmail.com)

## Specifications

# CaptureBoard™

Ideal for meetings in which a projected image is discussed.

### A better meeting experience.

The PLUS CaptureBoard allows your meetings to be more dynamic, creative and productive. Meeting attendees can contribute ideas and provide input by adding their comments to the "writable" screen of the board. Combine and save all of the notes and comments along with the original projected image to your computer. Exact copies of the meeting notes can be easily stored or distributed as printed copies or via email.

#### Project & Write

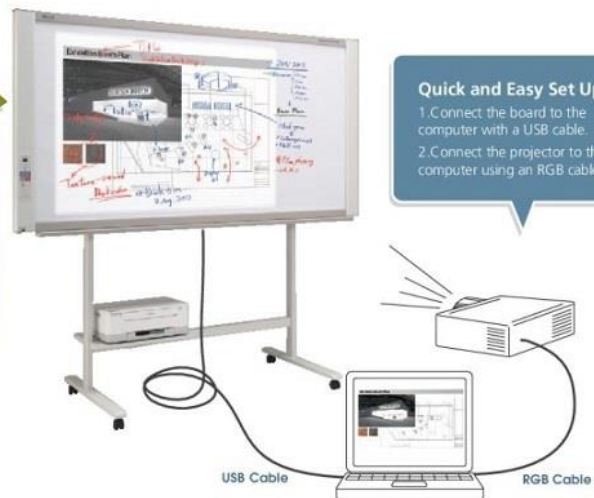
The CaptureBoard's unique screen surface possesses the properties of both a projection screen and a dry-erase board.

Project an image of up to 60 inches. Use the supplied color markers to write directly on both the projected image and in the blank spaces on the board.

The matte surface allows for sharp projected images with minimal reflection or glare.

#### Quick and Easy Set Up

1. Connect the board to the computer with a USB cable.
2. Connect the projector to the computer using an RGB cable.



#### Capture & Save

The easy-to-use CaptureBoard software allows you to combine and save the projected image with the hand-written notes into a single digital file on your computer.

The simple four-button menu is intuitive and learning the software requires little training.

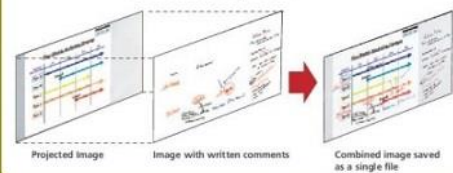
The combined image can be saved as a JPEG, PNG or PDF file which can be easily printed in color, attached to an email or incorporated into office documents.



#### Software Menu

- Scan Board
- Select Corner Mark Color
- Scroll Sheet
- Board Settings

#### Software Overlay Method



Save as JPEG, PNG, or PDF

## Specifications

### Usage.

**1 Begin your meetings quickly.**  
Start up the CaptureBoard software to bring up the main menu at the top right of the projected image. Four small circles appear in the corners of the image. Trace each circle with one of the supplied markers. The circles aid the software with proper alignment.

**2 Have a lively and dynamic discussion.**  
Using the supplied markers, write anywhere on the screen, including over the projected image. Everyone can contribute, resulting in a lively and productive meeting.

**3 Combine and save the image and notes.**  
To save your work press the Scan Button. The screen will scroll to the left to scan the written comments and then send them to your computer. On your PC, the CaptureBoard software overlays the written comments with the projected image. The file can then be saved and printed. You can be confident knowing that everyone possesses exact copies of the presentation.

**4 Modify and share the saved information.**  
It is easy to distribute the meeting notes to co-workers since everything is saved as a digital image file. For example:  
Send revised design plans to the production department; insert the meeting notes into office documents; or, simply email the day's work to anyone who was absent from the meeting.

### Copyboard Functionality

When not used with a projected image, the CaptureBoard can be used as a copyboard.

**Push Button Operation for printing your notes to paper or saving your work digitally.** Surpasses the functionality of a chalkboard or whiteboard.

#### USB Memory Stick Port

Push a button to save the hand-written notes to a USB memory stick without ever connecting to a computer. Note: Images projected on the screen cannot be saved using this method.

#### On-Board Printer (Optional)

A USB port and a printer tray allow for the connection of a color printer.\* With a connected printer, print the hand-written notes directly from the board.

\*See the Specifications and check with your dealer for current compatible printers.

*Write  
Print  
Save*



# Specifications

## PLUS C-20 Series

Updated and slimmed down. The next generation of PLUS CaptureBoards.



### Network Function

Connect to a network via an ethernet cable. There are two options for saving and sharing your information over the network.

- Save your copyboard data to the board's internal memory. Approximately 100 pages can be stored. Using an assigned IP address, your team can access the images on the board from their computers using a web browser. The data on the board is accessible even in "Stand-by" mode. Password protect the board for added security.
- When connected to the network, you can save to an FTP server so that everyone on your team has access to the saved information.



### Improved writing surface

Easier to erase. No need for special markers. You can now use regular dry erase markers on the writing surface.

### New, more convenient printing

Now, with the C-20, you can use the on-board printer (optional) to print the combined projected image and notes.



Optional board comes with optional printer and board.

### Access Via Your Smart Phone

Just install the Meeting Pocket App (MTGpocket) and gain access to many useful and time-saving meeting tools. Both Apple iOS® and Google Android™ mobile operating systems are supported, so you can use your iPhone®, iPad® or Android™ phone. The MTGpocket App lets you perform the "scan" function of the board from your Smart Phone. The resulting image file can then be previewed and saved to your phone's memory – as well as to the memory of phones belonging to anyone present in the meeting who has the MTGpocket App installed! Furthermore, the MTGpocket App lets you record audio and video during the meeting. The audio and video files are organized in the same folder as the board image files, so that all of the meeting data is in one convenient location. [Note: Using the MTGpocket App requires the connection of a "wireless access point" to the board as well as a compatible phone. Compatible with Apple iOS 4 and above and Android 2.3 and above.]



### Faster Scanning Time

PLUS has once again improved scanning time. The C-20 boards (standard width model) scan in a mere 15 seconds – an improvement of 8 seconds over the previous model.

### Copyboard Functionality

When used as a copyboard, there is no need to install software. Just connect your computer to the board via a USB cable whenever you want to save an image of your hand-written notes. Both PC and Mac compatible.

### PDF, JPG and PNG Support

Users can easily save image files to USB memory or a PC in either PDF, JPG or PNG formats.

### Magnet Attachable

Magnets can be attached to the board surface.

### Specifications

| Model Name                                     | C-20S   | C-20W   |
|--|---|---|
| Resolution Method                              | Web Model or Floor Stand*   | Web Model or Floor Stand*   |
| External Dimensions (Without Master Tray)      | W58.3 x D3.5 x H36.4 inches (W1482 x D89 x H9322 mm)  | W78 x D3.5 x H36.4 inches (W1980 x D89 x H9322 mm)  |
| Height   | 44.4 in (1127 mm)   | 56.4 in (1432 mm)   |
| External Dimensions (With Floor Stand Inset**) | W58.3 x D3.6 x H36.6 inches (W1482 x D87.5 x H9347 mm)  | W78 x D3.6 x H36.6 inches (W1980 x D87.5 x H9347 mm)  |
| Floor Stand Height                             | 23.8 in (603.1 mm)  | 23.8 in (603.1 mm)  |
| Panel Size                                     | W51.2 x H31.8 inches (W1300mm x H808mm)   | W75.6 x H31.8 inches (W1900mm x H808mm)   |
| Effective Reading Area                         | W50.4 x H30.4 inches (W1280mm x H768mm)   | W70.1 x H30.4 inches (W1780mm x H768mm)   |
| Number of Panels                               | 2   | 2   |
| Grid   | 2 each 60mm Grid  | 2 each 60mm Grid  |
| Scanning                                       | Expless in one direction (Horizontal scanning)  | Expless in one direction (Horizontal scanning)  |
| Drive Method                                   | Manual / Manual   | Manual / Manual   |
| Reading Method                                 | CIS (Contact Image Sensor)  | CIS (Contact Image Sensor)  |
| Reading Illumination                           | RGB LED   | RGB LED   |
| Reading Resolution                             | Main scanning direction (vertical sheet surface) 10 dpi (0.82 dots/cm)<br>Sub scanning direction (horizontal sheet surface) 10 dpi (0.82 dots/cm)   | Main scanning direction (vertical sheet surface) 10 dpi (0.82 dots/cm)<br>Sub scanning direction (horizontal sheet surface) 10 dpi (0.82 dots/cm)   |
| Reading Area                                   | Black & White approx. 15 s<br>Color approx. 15 s  | Black & White approx. 21 s<br>Color approx. 21 s  |
| USB Ports                                      | 3 Ports: Type B for PC and Type A for Printer and for USB Flash Memory  | 3 Ports: Type B for PC and Type A for Printer and for USB Flash Memory  |
| Save   | File Format: PDF, PNG & JPG   | File Format: PDF, PNG & JPG   |
| Output   | 2458 x 1728 dots (fixed)  | 3418 x 1728 dots (fixed)  |
| Type   | USB Flash Memory  | USB Flash Memory  |
| External Memory                                | FAT 16, 32  | FAT 16, 32  |
| Network  | LAN Port: RJ-45 (10Base-T/100Base-TX)   | LAN Port: RJ-45 (10Base-T/100Base-TX)   |
| Compatible Printers**                          | Inkjet Printers: HP PCL6 & PCL6XL compatible (with some exceptions)<br>Color Laser Printers: Konica Minolta magcolor 800W and 1800MF  | Inkjet Printers: HP PCL6 & PCL6XL compatible (with some exceptions)<br>Color Laser Printers: Konica Minolta magcolor 800W and 1800MF  |
| Printing Resolution                            | 300 dpi or equivalent   | 300 dpi or equivalent   |
| Print Color                                    | 16 or grayscale   | 16 or grayscale   |
| Printer Interface                              | Conforming to USB 2.0 standards   | Conforming to USB 2.0 standards   |
| Clock  | Used for the timestamp and for file dating purposes (includes backup battery for when there is a loss of power)   | Used for the timestamp and for file dating purposes (includes backup battery for when there is a loss of power)   |
| PC Connection                                  | Images can be acquired and device settings made via USB using a terminal.   | Images can be acquired and device settings made via USB using a terminal.   |
| AC Power Adapter                               | Input: AC100-240V/50-60 Hz, Max 0.75 A<br>Output: DC 12 V 3.3 A   | Input: AC100-240V/50-60 Hz, Max 0.75 A<br>Output: DC 12 V 3.3 A   |
| PC Consumption                                 | in standby: 3W, During operation: 10W (not including printer)   | in standby: 3W, During operation: 10W (not including printer)   |
| Usage Conditions                               | Temperature: 10°C - 35°C<br>Humidity: 10 - 85% (with no condensation)   | Temperature: 10°C - 35°C<br>Humidity: 10 - 85% (with no condensation)   |
| OS   | Microsoft Windows 2000 Professional (Service Pack 4 or Later) / Windows XP (Home Edition/Professional Edition (Service Pack 2 or Later) / Vista (32 bit) / Windows 7 (32 bit / 64 bit) / Mac OS X 10.5 or later | Microsoft Windows 2000 Professional (Service Pack 4 or Later) / Windows XP (Home Edition/Professional Edition (Service Pack 2 or Later) / Vista (32 bit) / Windows 7 (32 bit / 64 bit) / Mac OS X 10.5 or later |
| Web Browser                                    | Windows: Internet Explorer 6.0 or Later<br>Macintosh: Safari 4 or Later   | Windows: Internet Explorer 6.0 or Later<br>Macintosh: Safari 4 or Later   |
| Accessories                                    | Master (Black, Red, Blue, Green, Eraser, AC Power Adapter, USB Cable (3 ft Length), User's Manual, Assembly Set-up Manual, Printer Setup, Web Mapping, Diagnostic)  | Master (Black, Red, Blue, Green, Eraser, AC Power Adapter, USB Cable (3 ft Length), User's Manual, Assembly Set-up Manual, Printer Setup, Web Mapping, Diagnostic)  |
| Optional Accessories                           | Rolling Floor Stand (Part #02-084)  | Rolling Floor Stand (Part #02-084)  |

\* Floor stand sold separately. The height is adjustable at 66.8, 72.7 and 78.6 inches (1747, 1847 and 1947 mm).  
\*\* The value indicated for "H" (height) is the maximum height.  
\*\*\* USB Memory device not included. The memory capacity corresponds to 32GB or Less.  
\*\*\*\* Printer sold separately. Check with your dealer for current available center models.  
\*\*\*\*\* Please note that for quality improvement purposes, specifications and design are subject to change without prior notice.

Microsoft®, Windows and Internet Explorer are either registered trademarks or trademarks of Microsoft Corporation in the United States and/or other countries. Macintosh, Mac, iPhone, iPod and Safari are trademarks of Apple Inc., registered in the U.S. and other countries. iOS is a trademark or registered trademark of Cisco in the U.S. and other countries and is used under license.

## PLUS Corporation of America

9610 SW SUNSHINE CT.  
SUITE 100  
BEAVERTON, OR 97005  
800-211-9001 - 503-748-8700  
www.plus-america.com